

ELECTRIC SOLID TOP - TOP VERSION

CODICE
CR1138899T4W

MODELLO
DT94/10TCTE-T4W

SERIE
DIAMANTE 4.0



GENERAL CHARACTERISTICS

Diamond 90 Touch 4.0 - Everything under control Everything is under control, perfect results every time. Thanks to the practical display, parameter selection is quick and precise. Easy and clear temperature management, and special functions are always visible and accessible from the display. Tradition and innovation, everything on your worktop A new non-slip square and rounded knob design for a more ergonomic grip and an embossed indicator that makes it easier to select the datum to be set. And with the exclusive Encoder Functionality, simply touch the parameter you want, turn the knob to adjust the level and press it to start the set datum. With water- and dirt-proof crown. Quick and precise parameter selection. Easy and clear temperature management. Special functions always visible and accessible from the display. Stainless steel outer shells and feet. Height from worktop adjustable from 840 to 900 mm. Tops with 2 mm thickness All model-identified equipment (T4W) is 4.0 Ready equipment, allowing you to benefit from all the advantages of connecting your equipment to a cloud system.

TECHNICAL SPECIFICATIONS

- Stainless steel outer shells and feet. ■ Height from worktop adjustable from 840 to 900 mm. ■ The heating of each cooking zone is achieved by means of a controlled radiation element with a safety thermostat. ■ Temperature regulation from 50 to 400°C by thermostat. ■ Possibility of setting 2 timers to control cooking. ■ An acoustic signal alerts the operator at the end of the set time. ■ Hotplate temperature control via touch screen and adjustment with ergonomic knob.

- Hotplate temperature control via touch screen and adjustment with ergonomic knob ■ Cantilevered plate with perimeter grease trough with drain hole. ■ 4 independent cooking zones with 4 kW

- power each. ■ industry 4.0 ready version. ■ Everything is under control, perfect results every time. Thanks to the practical display, parameter selection is quick and precise. Easy and clear temperature management, and special functions are always visible and accessible from the display. ■ Thanks to the jet-proofing certification (IPX5) obtained through specific tests, knobs and under-knobs can be washed, without compromising functionality and safety. ■ Thermostat for surface temperature regulation from 50 to 400°C, and with safety function for overtemperature protection. ■ Radiant plate size 710x710 mm thickness 18 mm made of steel with electrolytic hard chrome coating.

ELECTRIC SOLID TOP - TOP VERSION

CODICE
CR1138899T4W

MODELLO
DT94/10TCTE-T4W

SERIE
DIAMANTE 4.0

Technical Information

SPECIFICATION	DATA
MATERIAL	CR1138899T4W
SUPPLY	ELECTRICS
DIM. WIDTH	800 mm
DIM. PRODUCTIVITY	900 mm
DIM. HEIGHT	250 mm
STANDARD POWER SUPPLY	380-415V 3N
ELECTRICAL POWER	16 kW

ELECTRIC SOLID TOP - TOP VERSION



weinnovate cooking

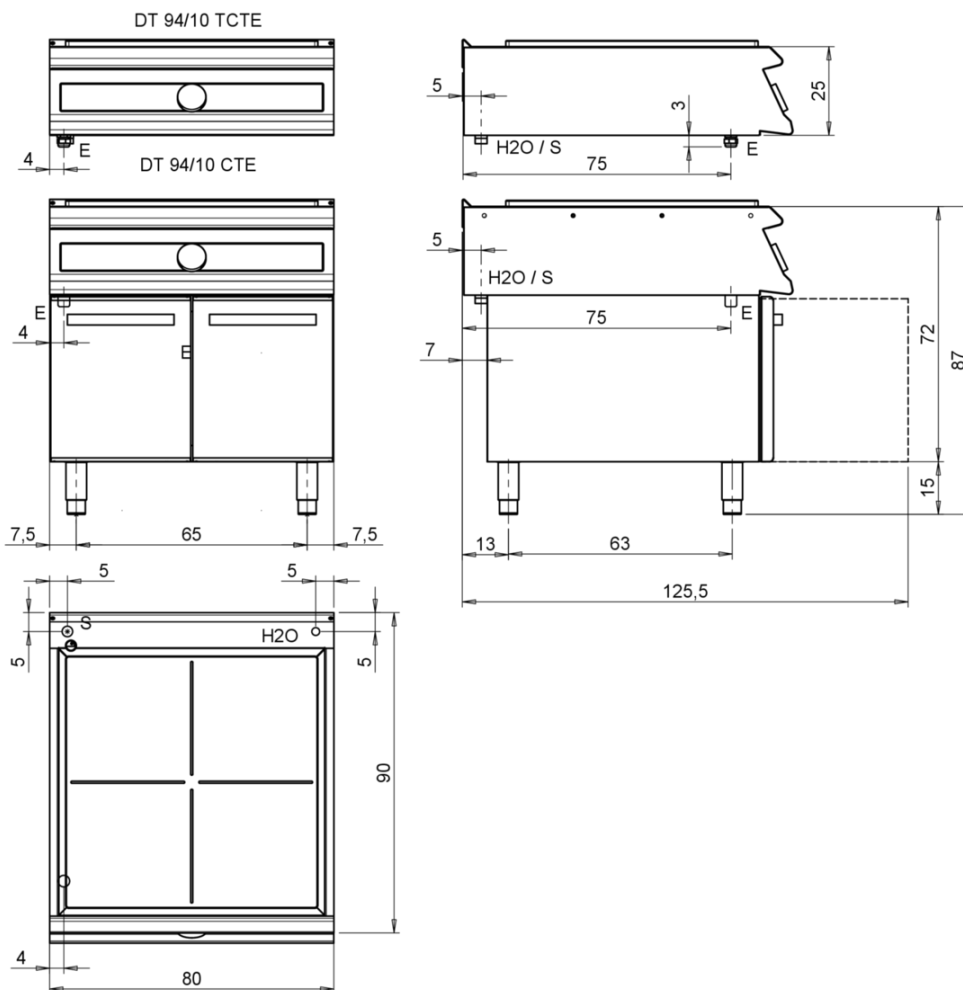
CODICE
CR1138899T4W

MODELLO
DT94/10TCTE-T4W

SERIE
DIAMANTE 4.0

SCHEMA DI INSTALLAZIONE - INSTALLATION DIAGRAM - INSTALLATIONSPLAN - SCHÉMA D'INSTALLATION - ESQUEMA DE INSTALACION - INSTALLATIESCHEMA - IINSTALLATIONSRTNINGAR

MISURE IN cm - DIMENSIONS IN cm - ABMESSUNGEN IN cm - MESURES EN cm
MEDIDAS EN cm - MATEN IN cm - DIMENSIONES EN cm



Legenda - Legende - Key - Légende - Leyenda - Legenda - Legenda	
E Pressacavo entrata linea elettrica - Stopfbuchse - Electric cable stress relief - Presse étoupe de câble él - Pisacable - Elektrische kabelwartel - Entrada cabo eléctrico	G Arrivo gas - Gasanschluss - Gas connection - Arrivée gaz - Union de gas - Gasaansluiting - Ligação gás
S Attacco scarico acqua - Wasserablauf - Water outlet - Vidange de l'eau - Desaguadero - Wateraftapaansluiting - Junção descarga água	H2O Arrivo acqua - Wasseranschluss - Water inlet - Arrivée eau - Union de agua - Wateraansluiting - Junção alimentação água
S1 Scarico vasca - Wannenabflussrohr - Pan outlet - Vidange du bac - Descarga cuba - Water toevoer - Descarga da cuba	A1 = Calda - Heiss - Warm - Chaude - Caliente - Warm - Morno A2 = Fredda - Kalt - Cold - Froid - Fria - Koude - Frio
S2 Valvola di depressione - Anti-depression valve - Unterdruck ventil - Soupape de dépression - Válvula de depresión - Onderdrukklep - Válvula de depressão	L Rubinetto di livello - Level tap - Wasserhahn - Robinet de niveau - Grifo de nível - Niveaakraan - Torneira de nível
S3 Scarico acqua intercapedine - Wasserablauf Zwischenraum - Jacket water drain Evacuation eau double envelope - Descarga de agua intersticios - Afvoer water tussenuimte - Descarga de água na marmitta com Sistema de aquecimento indirecto	

ELECTRIC SOLID TOP - TOP VERSION

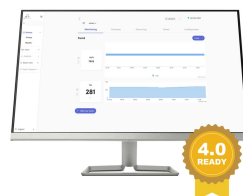
CODICE
CR1138899T4W

MODELLO
DT94/10TCTE-T4W

SERIE
DIAMANTE 4.0



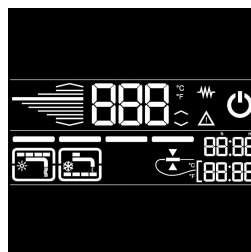
Possibility of setting 2 timers to control cooking. An acoustic signal warns the operator at the end of the set time.



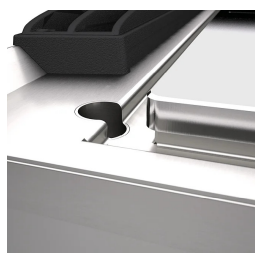
Temperature control via touch screen and adjustment with ergonomic knob



Hotplate temperature control via touch screen and adjustment with ergonomic knob



Everything is under control, perfect results every time. Thanks to the practical display, parameter selection is quick and precise. Easy and clear temperature management, and special functions are always visible and accessible from the display.



Cantilevered plate with perimeter grease trough with drain hole.



Thanks to the jet-proofing certification (IPX5) obtained through specific tests, knobs and under-knobs can be washed, without compromising functionality and safety.



4 independent cooking zones.

ELECTRIC SOLID TOP - TOP VERSION

CODICE
CR1138899T4W

MODELLO
DT94/10TC TE-T4W

SERIE
DIAMANTE 4.0

ACCESSORIES

CODE	MODELLO	DESCRIZIONE
CR1357499	4.0IOTPRO	PRO Subscription - Cloud
CR1357479	4.0IOTENTRY	ENTRY Subscription - Cloud