

120 lt. MOTORISED GAS BRATT PAN WITH IRON BOTTOM (Extra EU)

CODICE
CR0990729

MODELLO
D96/10KBGM

SERIE
DIAMANTE 90



GENERAL CHARACTERISTICS

In addition to offering the maximum choice of solutions and 2 mm thick and 90 cm deep tops, this series has all the power, robustness and functionality you need to work efficiently. External coatings and feet in stainless steel with Scotch Brite finish. Working table height adjustable from 840 to 900 mm. Range modularity: 200-400-600-800-1200 Wide range of accessories.

TECHNICAL SPECIFICATIONS

■ Multifunctional tilting braising pan, equipment for professional catering, suitable for cooking sauces, braises and cooking with oil. ■ It guarantees high performance, exceptional firing uniformity. ■ Water feed directly into the tank via standard solenoid valve, controlled by a button on the front of the equipment ■ Cooking temperature controlled by thermostat with adjustment from 100 to 280°C.

■ IRON baking tray (available for non-EU markets) with 2 mm thickness. ■ Cooking temperature controlled by thermostat with

adjustment from 100 to 280°C. ■ Heating by chrome-plated steel burner. ■ Safety valve with thermocouple, electric ignition. ■ Robust, double-walled, self-balancing lids made of stainless steel to reduce heat loss. ■ Large-radius tilting tank. ■ Equipment certified for low voltage directive 2014/35/EU according to the international CB scheme. ■ Thanks to the jet-proofing certification (IPX5) obtained through specific tests, knobs and under-knobs can be washed, without compromising functionality and safety.

120 lt. MOTORISED GAS BRATT PAN WITH IRON BOTTOM (Extra EU)

CODICE
CR0990729

MODELLO
D96/10KBGM

SERIE
DIAMANTE 90

Technical Information

SPECIFICATION	DATA
MATERIAL	CR0990729
DEFINITION	D96/10 KBGM BRASIERA GAS M120 FE MOT.
COMMERCIAL LINE	DIAMANTE
SUPPLY	MIXED
DIM. WIDTH	1200 mm
DIM. PRODUCTIVITY	900 mm
DIM. HEIGHT	870 mm
NET WEIGHT	206 Kg
VOLUME (net)	0.94
PACKAGE LENGTH	1260 mm
PACKAGE WIDTH	1020 mm
PACKAGING HEIGHT	1150 mm
PACKAGE VOLUME	1,230 m3
GROSS PACKING WEIGHT	220.8 Kg
STANDARD POWER SUPPLY	220-240V 1N
FREQUENCY	50 Hz
ELECTRICAL POWER	0.12 kW
GAS POWER	24
GAS POWER (G25.3/25mbar)	20,00
IP GRADE	IPX5
CERTIFIED MODEL	D96/10 KBGM

120 lt. MOTORISED GAS BRATT PAN WITH IRON BOTTOM (Extra EU)

CODICE
CR0990729

MODELLO
D96/10KBGM

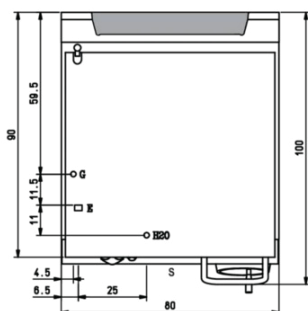
SERIE
DIAMANTE 90

SCHEMA DI INSTALLAZIONE - INSTALLATION DIAGRAM - INSTALLATIONSPLAN - SCHÉMA D'INSTALLATION - ESQUEMA DE INSTALACION - INSTALLATIESCHEMA - IINSTALLATIONSRTNINGAR

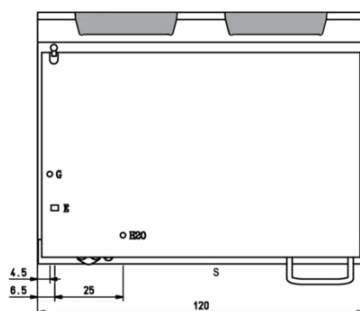
MISURE IN cm - DIMENSIONS IN cm - ABMESSUNGEN IN cm
MESURES EN cm - MEDIDAS EN cm - MATEN IN cm



(D) 94/10 KBG ...



(D) 96/10 KBG ...



Legenda - Legende - Key - Légende - Leyenda - Legend

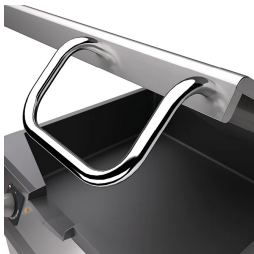
- H2O** Attacco arrivo acqua - Wasseranschluss - Water inlet
Arrivée eau - Union de agua - Wateraansluiting
EN ISO 228-1 G 3/4
- E** Pressacavo entrata linea elettrica - Stopfbuchse - Electric cable stress relief
Presse étoupe de câble él. - Pisacable - Elektrische kabelwartel
- G** Attacco arrivo gas - Gasanschluss - Gas connection
Arrivée gaz - Union de gas - Gasaansluiting
EN 10226-1 R 1/2; EN ISO 228-1 G 1/2 (DK)
- S** Scarico vasca - Wannenabflussrohr - Pan outlet
Vidange du bac - Descarga cuba - Water toevoer

120 lt. MOTORISED GAS BRATT PAN WITH IRON BOTTOM (Extra EU)

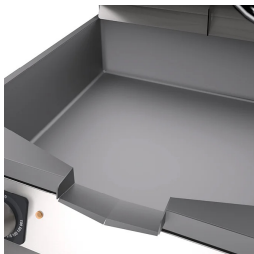
CODICE
CR0990729

MODELLO
D96/10KBGM

SERIE
DIAMANTE 90



Self-balancing lids.



Large-radius tilting tank.



Equipment certified for low voltage
directive 2014/35/EU according to the
international CB scheme.



Thanks to the jet-proofing certification
(IPX5) obtained through specific tests,
knobs and under-knobs can be washed,
without compromising functionality
and safety.