

80 litre ELECTRIC MOTORISED BRATT PAN WITH STAINLESS STEEL BOTTOM

CODICE
CR0990779

MODELLO
D94/10KBEIM

SERIE
DIAMANTE 90



GENERAL CHARACTERISTICS

In addition to offering the maximum choice of solutions and 2 mm thick and 90 cm deep tops, this series has all the power, robustness and functionality you need to work efficiently. External coatings and feet in stainless steel with Scotch Brite finish. Working table height adjustable from 840 to 900 mm. Range modularity: 200-400-600-800-1200 Wide range of accessories.

TECHNICAL SPECIFICATIONS

■ Multifunctional tilting braising pan, equipment for professional catering, suitable for cooking sauces, braises and cooking with oil. ■ It guarantees high performance, exceptional firing uniformity. ■ Water feed directly into the tank via standard solenoid valve, controlled by a button on the front of the equipment ■ Cooking temperature controlled by thermostat with adjustment from 100 to 280°C.

■ Stainless steel cooking vessel, 10 mm thick. ■ Robust, double-walled, self-balancing lids made of stainless steel to reduce heat loss. ■ Cooking temperature controlled by thermostat with adjustment from 100 to 280°C. Heating via armoured incoloy heating elements. ■ Large-radius tilting tank. ■ Equipment certified for low voltage directive 2014/35/EU according to the international CB scheme. ■ Thanks to the jet-proofing certification (IPX5) obtained through specific tests, knobs and under-knobs can be washed, without compromising functionality and safety.

80 litre ELECTRIC MOTORISED BRATT PAN WITH STAINLESS STEEL BOTTOM

CODICE
CR0990779

MODELLO
D94/10KBEIM

SERIE
DIAMANTE 90

Technical Information

SPECIFICATION	DATA
MATERIAL	CR0990779
DEFINITION	D94/10 KBEIM BRASIERA EL.80 INOX MOT.
COMMERCIAL LINE	DIAMANTE
SUPPLY	ELECTRICS
DIM. WIDTH	800 mm
DIM. PRODUCTIVITY	900 mm
DIM. HEIGHT	870 mm
NET WEIGHT	143.8 Kg
VOLUME (net)	0.626
PACKAGE LENGTH	850 mm
PACKAGE WIDTH	1020 mm
PACKAGING HEIGHT	1150 mm
PACKAGE VOLUME	1,010 m3
GROSS PACKING WEIGHT	161.4 Kg
STANDARD POWER SUPPLY	380-415V 3N
FREQUENCY	50-60 Hz
ELECTRICAL POWER	9 kW
IP GRADE	IPX5
CERTIFIED MODEL	D94/10 KBEIM

80 litre ELECTRIC MOTORISED BRATT PAN WITH STAINLESS STEEL BOTTOM

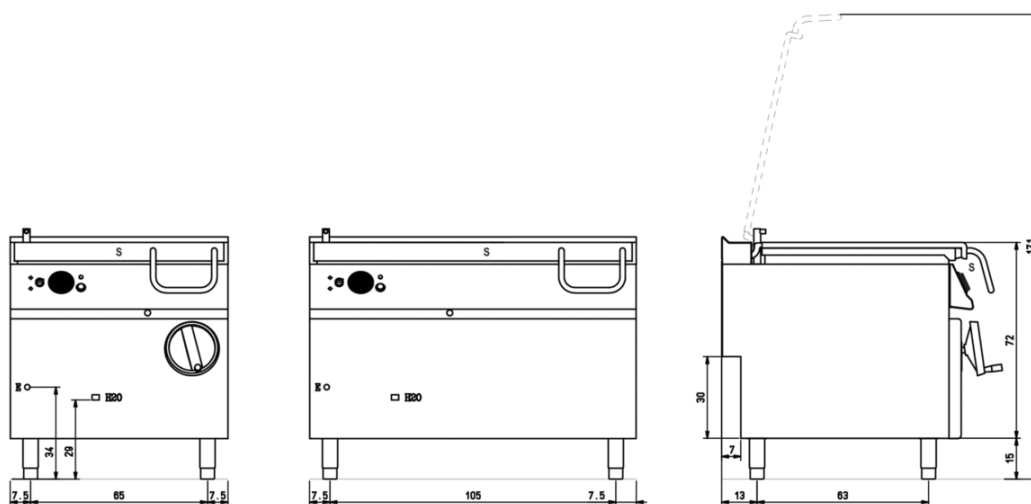
CODICE
CR0990779

MODELLO
D94/10KBEIM

SERIE
DIAMANTE 90

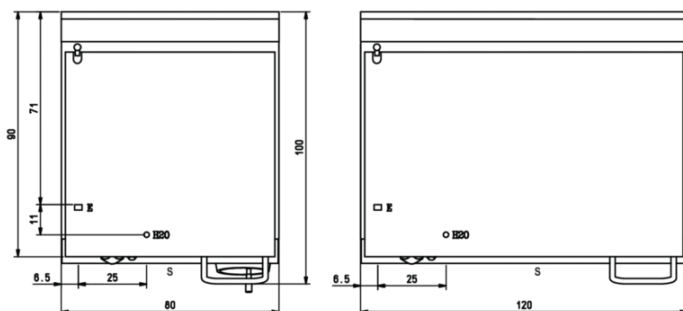
SCHEMA DI INSTALLAZIONE - INSTALLATION DIAGRAM - INSTALLATIONSPLAN - SCHÉMA D'INSTALLATION - ESQUEMA DE INSTALACION - INSTALLATIESCHEMA - IINSTALLATIONSRIJNINGAR

MISURE IN cm - DIMENSIONS IN cm - ABMESSUNGEN IN cm
MESURES EN cm - MEDIDAS EN cm - MATEN IN cm



(D) 94/10 KBE ...

(D) 96/10 KBE ...



Legenda - Legende - Key - Légende - Leyenda - Legenda

H2O Attacco arrivo acqua - Wasseranschluss - Water inlet
Arrivée eau - Union de agua - Wateraansluiting

EN ISO 228-1 G 3/4

E Pressacavo entrata linea elettrica - Stopfbuchse - Electric cable stress relief
Presse étoupe de câble él. - Pisacable - Elektrische kabelwartel

S Scarico vasca - Wannenabflussrohr - Pan outlet
Vidange du bac - Descarga cuba - Water toevoer

80 litre ELECTRIC MOTORISED BRATT PAN WITH STAINLESS STEEL BOTTOM

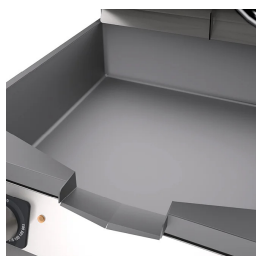
CODICE
CR0990779

MODELLO
D94/10KBEIM

SERIE
DIAMANTE 90



Self-balancing lids.



Large-radius tilting tank.



Equipment certified for low voltage
directive 2014/35/EU according to the
international CB scheme.



Thanks to the jet-proofing certification
(IPX5) obtained through specific tests,
knobs and under-knobs can be washed,
without compromising functionality
and safety.