

# ELECTRIC FRY TOP SMOOTH PLATE AISI 430 TOP

CODICE  
CR0998309

MODELLO  
D96/10TFTEA

SERIE  
DIAMANTE 90



## GENERAL CHARACTERISTICS

In addition to offering the maximum choice of solutions and 2 mm thick and 90 cm deep tops, this series has all the power, robustness and functionality you need to work efficiently. External coatings and feet in stainless steel with Scotch Brite finish. Working table height adjustable from 840 to 900 mm. Range modularity: 200-400-600-800-1200 Wide range of accessories.

## TECHNICAL SPECIFICATIONS

■ Cooking plate lowered from the plane by 4 cm and tilted 1 cm toward the front of the machine for grease drainage. ■ Tops with 2 mm thickness ■ Plates inclined by 10mm towards the front of the machine. ■ Large grease collection drawer. ■ Electric version: heating by incoloy armored heating elements.

■ A 10-mm inclination of the plates towards the front of the machine allows optimal grease outflow to the grease tray. ■ Plate

welded to the hob that provides a larger cooking zone and eliminates dirt accumulation areas. ■ Plate with armoured incoloy heating elements placed under the bottom for cooking with temperature uniformity. ■ Equipment certified for low voltage directive 2014/35/EU according to the international CB scheme. ■ Thanks to the jet-proofing certification (IPX5) obtained through specific tests, knobs and under-knobs can be washed, without compromising functionality and safety.

## ELECTRIC FRY TOP SMOOTH PLATE AISI 430 TOP

CODICE  
CR0998309

MODELLO  
D96/10TFTEA

SERIE  
DIAMANTE 90

### Technical Information

SPECIFICATION	DATA
MATERIAL	CR0998309
DEFINITION	D96/10 TFTEA FTE LISCIO M120 430 TOP
COMMERCIAL LINE	DIAMANTE
SUPPLY	ELECTRICS
DIM. WIDTH	1200 mm
DIM. PRODUCTIVITY	900 mm
DIM. HEIGHT	250 mm
NET WEIGHT	115 Kg
VOLUME (net)	0.27
PACKAGE LENGTH	440 mm
PACKAGE WIDTH	980 mm
PACKAGING HEIGHT	500 mm
PACKAGE VOLUME	0,540 m3
GROSS PACKING WEIGHT	130 Kg
STANDARD POWER SUPPLY	380-415V 3N
FREQUENCY	50-60 Hz
ELECTRICAL POWER	22.5 kW
IP GRADE	IPX5
CERTIFIED MODEL	D96/10 TFTEA

# ELECTRIC FRY TOP SMOOTH PLATE AISI 430 TOP

CODICE  
CR0998309

MODELLO  
D96/10TFTEA

SERIE  
DIAMANTE 90

## SCHEMA DI INSTALLAZIONE - INSTALLATION DIAGRAM - INSTALLATIONSPLAN - SCHÉMA D'INSTALLATION - ESQUEMA DE INSTALACION - INSTALLATIESCHEMA - IINSTALLATIONSRTNINGAR

MISURE IN cm - DIMENSIONS IN cm - ABMESSUNGEN IN cm  
MESURES EN cm - MEDIDAS EN cm - MATEN IN cm



Legenda - Legende - Key - Légende - Leyenda - Legenda

**E** Pressacavo entrata linea elettrica - Stopfbuchse - Electric cable stress relief  
Presse étoupe de câble él. - Pisacable - Elektrische kabelwartel

## ELECTRIC FRY TOP SMOOTH PLATE AISI 430 TOP

CODICE  
CR0998309

MODELLO  
D96/10TFTEA

SERIE  
DIAMANTE 90



A 10-mm inclination of the plates towards the front of the machine allows optimal grease outflow to the grease tray.



Thanks to the jet-proofing certification (IPX5) obtained through specific tests, knobs and under-knobs can be washed, without compromising functionality and safety.

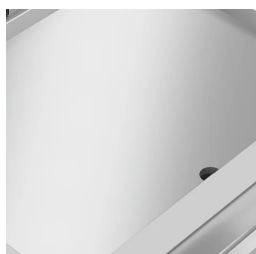
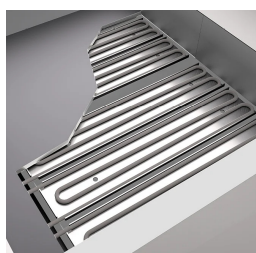


Plate welded to the hob that provides a larger cooking zone and eliminates dirt accumulation areas.



Predisposition for core probe, for even greater cooking control. Reaching the set core temperature is signalled by an acoustic signal



Equipment certified for low voltage directive 2014/35/EU according to the international CB scheme.

## ELECTRIC FRY TOP SMOOTH PLATE AISI 430 TOP

**CODICE**  
CR0998309

**MODELLO**  
D96/10TFTEA

**SERIE**  
DIAMANTE 90

### ACCESSORIES

CODE	MODELLO	DESCRIZIONE
CR0957610	90XFTP12	SPLASH GUARD FOR FRY TOP MODULE 120
CR0592089	NXFTC6/8	Fry top cleaning drawer M40-M60-M80-M120
CR0592079	NXFTC4	Fry top cleaning drawer M40-M120
CR0592060	NXFTT	PLANCHA CLEANING PLUG
CR1354989	PRPC	Smooth plate cleaning scraper - chrome-plated
CR1354999	PKLR	Replacement blades (10PCS)
CR1356399	RPR	Striped chrome plate scraper