

FRY TOP GAS SMOOTH PLATE AISI 430 TOP

CODICE
CR0998109

MODELLO
D96/10TFTTGA

SERIE
DIAMANTE 90



GENERAL CHARACTERISTICS

In addition to offering the maximum choice of solutions and 2 mm thick and 90 cm deep tops, this series has all the power, robustness and functionality you need to work efficiently. External coatings and feet in stainless steel with Scotch Brite finish. Working table height adjustable from 840 to 900 mm. Range modularity: 200-400-600-800-1200 Wide range of accessories.

TECHNICAL SPECIFICATIONS

- Cooking plate lowered from the plane by 4 cm and tilted 1 cm toward the front of the machine for grease drainage. ■ Tops with 2 mm thickness ■ Plates inclined by 10mm towards the front of the machine.
- Large grease collection drawer. ■ Tubular burner with self-stabilising flame with great uniformity of heat distribution.

- A 10-mm inclination of the plates towards the front of the machine allows optimal grease outflow to the grease tray. ■ Plate welded to the hob that provides a larger cooking zone and eliminates dirt accumulation areas. ■ Even heat distribution thanks to several burners under the hotplate. ■ Thanks to the jet-proofing certification (IPX5) obtained through specific tests, knobs and under-knobs can be washed, without compromising functionality and safety.

FRY TOP GAS SMOOTH PLATE AISI 430 TOP

CODICE
CR0998109

MODELLO
D96/10TFTTGA

SERIE
DIAMANTE 90

Technical Information

| SPECIFICATION | DATA |
|--------------------------|------------------------------------------|
| MATERIAL | CR0998109 |
| DEFINITION | D96/10 TFTTGA FTG LISCIO M120 430 TOP TE |
| COMMERCIAL LINE | DIAMANTE |
| SUPPLY | GAS |
| DIM. WIDTH | 1200 mm |
| DIM. PRODUCTIVITY | 900 mm |
| DIM. HEIGHT | 250 mm |
| NET WEIGHT | 120 Kg |
| VOLUME (net) | 0.27 |
| PACKAGE LENGTH | 440 mm |
| PACKAGE WIDTH | 980 mm |
| PACKAGING HEIGHT | 500 mm |
| PACKAGE VOLUME | 0,216 m3 |
| GROSS PACKING WEIGHT | 130 Kg |
| GAS POWER | 31.5 |
| GAS POWER (G25.3/25mbar) | 30,00 |
| CERTIFIED MODEL | D96/10 TFTTGA |

FRY TOP GAS SMOOTH PLATE AISI 430 TOP

CODICE
CR0998109

MODELLO
D96/10TFTTGA

SERIE
DIAMANTE 90

SCHEMA DI INSTALLAZIONE - INSTALLATION DIAGRAM - INSTALLATIONSPLAN - SCHÉMA D'INSTALLATION - ESQUEMA DE INSTALACION - INSTALLATIESCHEMA - IINSTALLATIONSRTNINGAR

MISURE IN cm - DIMENSIONS IN cm - ABMESSUNGEN IN cm
MESURES EN cm - MEDIDAS EN cm - MATEN IN cm



Legenda - Legende - Key - Légende - Leyenda - Legenda

G Attacco arrivo gas - Gasanschluss - Gas connection
Arrivée gaz - Union de gas - Gasaansluiting
EN 10226-1 R 1/2; EN ISO 228-1 G 1/2 (DK)

FRY TOP GAS SMOOTH PLATE AISI 430 TOP

CODICE
CR0998109

MODELLO
D96/10TFTTGA

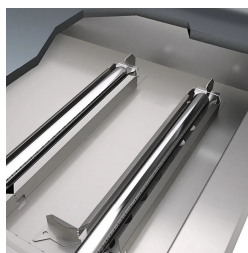
SERIE
DIAMANTE 90



A 10-mm inclination of the plates towards the front of the machine allows optimal grease outflow to the grease tray.



Plate welded to the hob that provides a larger cooking zone and eliminates dirt accumulation areas.



Even heat distribution thanks to several burners under the hotplate.



Thanks to the jet-proofing certification (IPX5) obtained through specific tests, knobs and under-knobs can be washed, without compromising functionality and safety.

FRY TOP GAS SMOOTH PLATE AISI 430 TOP

CODICE
CR0998109

MODELLO
D96/10TFTTGA

SERIE
DIAMANTE 90

ACCESSORIES

| CODE | MODELLO | DESCRIZIONE |
|-----------|----------|-----------------------------------------------|
| CR0957610 | 90XFTP12 | SPLASH GUARD FOR FRY TOP MODULE 120 |
| CR0592060 | NXFTT | PLANCHA CLEANING PLUG |
| CR0592089 | NXFTC6/8 | Fry top cleaning drawer M40-M60-M80-M120 |
| CR0592079 | NXFTC4 | Fry top cleaning drawer M40-M120 |
| CR1354989 | PRPC | Smooth plate cleaning scraper - chrome-plated |
| CR1356399 | RPR | Striped chrome plate scraper |
| CR1354999 | PKLR | Replacement blades (10PCS) |