

ELECTRIC COOKER WITH 4 SQUARE TOP PLATES

CODICE
CR0995629

MODELLO
D94/10TCEPQ

SERIE
DIAMANTE 90



GENERAL CHARACTERISTICS

In addition to offering the maximum choice of solutions and 2 mm thick and 90 cm deep tops, this series has all the power, robustness and functionality you need to work efficiently. External coatings and feet in stainless steel with Scotch Brite finish. Working table height adjustable from 840 to 900 mm. Range modularity: 200-400-600-800-1200 Wide range of accessories.

TECHNICAL SPECIFICATIONS

■ Square 300x300 mm cast iron heating plates, maximum power 4 kW, equipped with safety thermostat. ■ Heating control with 7-position selector switch.

■ Square plates of 30x30 each, fixed watertight on the worktop. ■ The temperature is adjusted by means of a 7-position selector

switch, and a warning light indicating the activation of the heating is located on the dashboard. ■ Equipment certified for low voltage directive 2014/35/EU according to the international CB scheme. ■ Thanks to the jet-proofing certification (IPX5) obtained through specific tests, knobs and under-knobs can be washed, without compromising functionality and safety.

ELECTRIC COOKER WITH 4 SQUARE TOP PLATES

CODICE
CR0995629

MODELLO
D94/10TCEPQ

SERIE
DIAMANTE 90

Technical Information

SPECIFICATION	DATA
MATERIAL	CR0995629
DEFINITION	D94/10 TCEPQ 4 PIASTRE QUADRE TOP
COMMERCIAL LINE	DIAMANTE
SUPPLY	ELECTRICS
DIM. WIDTH	800 mm
DIM. PRODUCTIVITY	900 mm
DIM. HEIGHT	250 mm
NET WEIGHT	64 Kg
VOLUME (net)	0.18
PACKAGE LENGTH	860 mm
PACKAGE WIDTH	1020 mm
PACKAGING HEIGHT	570 mm
PACKAGE VOLUME	0,500 m3
GROSS PACKING WEIGHT	75 Kg
STANDARD POWER SUPPLY	380-415V 3N
FREQUENCY	50-60 Hz
ELECTRICAL POWER	16 kW
N. FIRES/PLATES	QUATTRO FUOCHI
TENSION	400
IP GRADE	IPX5
CERTIFIED MODEL	D94/10 TCEPQ

ELECTRIC COOKER WITH 4 SQUARE TOP PLATES

CODICE
CR0995629

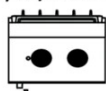
MODELLO
D94/10TCEPQ

SERIE
DIAMANTE 90

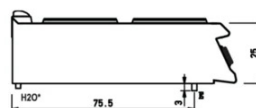
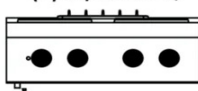
SCHEMA DI INSTALLAZIONE - INSTALLATION DIAGRAM - INSTALLATIONSPLAN - SCHÉMA D'INSTALLATION - ESQUEMA DE INSTALACION - INSTALLATIESCHEMA - IINSTALLATIONSRTNINGAR

MISURE IN cm - DIMENSIONS IN cm - ABMESSUNGEN IN cm
MESURES EN cm - MEDIDAS EN cm - MATEN IN cm

(D) 92/10TCEPQ



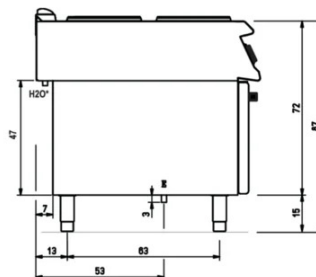
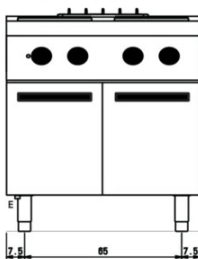
(D) 94/10TCEPQ



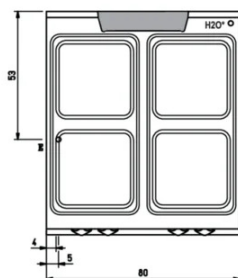
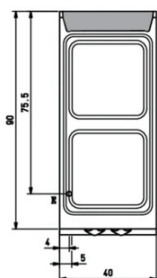
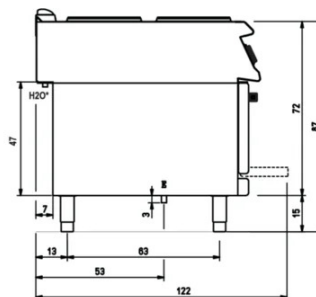
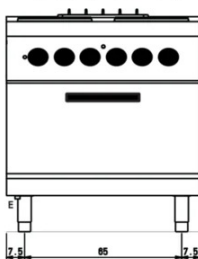
(D) 92/10CEPQ



(D) 94/10CEPQ



(D) 94/10CEEPQ



Legenda - Legende - Key - Légende - Leyenda - Legenda

E Pressacavo entrata linea elettrica - Stopfbuchse
Electric cable stress relief - Presse étoupe de câble él
Pisacable - Elektrische kabelwartel

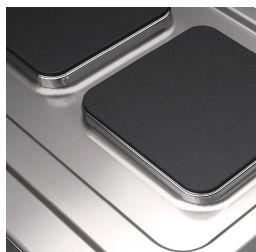
H20* Attacco arrivo acqua - Wasseranschluss - Water inlet
Arrivée eau - Union de agua - Wateraansluiting
EN ISO 228-1 G 3/4

ELECTRIC COOKER WITH 4 SQUARE TOP PLATES

CODICE
CR0995629

MODELLO
D94/10TCEPQ

SERIE
DIAMANTE 90



Square plates of 30x30 each, fixed watertight on the worktop.



The temperature is adjusted by means of a 7-position selector switch, and a warning light indicating the activation of the heating is located on the dashboard.



Equipment certified for low voltage directive 2014/35/EU according to the international CB scheme.



Thanks to the jet-proofing certification (IPX5) obtained through specific tests, knobs and under-knobs can be washed, without compromising functionality and safety.