

2-BURNER GAS COOKER TOP

CODICE
CR0995089

MODELLO
D92/10TCG

SERIE
DIAMANTE 90



GENERAL CHARACTERISTICS

In addition to offering the maximum choice of solutions and 2 mm thick and 90 cm deep tops, this series has all the power, robustness and functionality you need to work efficiently. External coatings and feet in stainless steel with Scotch Brite finish. Working table height adjustable from 840 to 900 mm. Range modularity: 200-400-600-800-1200 Wide range of accessories.

TECHNICAL SPECIFICATIONS

- Upper burners with stabilised flame, made of nickel-plated cast iron.
- Thermocouple safety valves with pilot flame.
- Black acid-resistant enamelled cast iron grids with long spokes for holding small pans.
- AISI304 stainless steel drip trays.
- Thanks to the jet-proofing certification (IPX5) obtained through specific tests, knobs and under-knobs can be washed, without compromising functionality and safety.
- Nickel-plated cast-iron stabilised flame burners with double-crown spreader (improved performance facilitated by a flame distributed over two different sectors), Grid with long spokes to facilitate holding small pots and pans

- Nickel-plated cast-iron stabilised flame burners with double-crown spreader (improved performance facilitated by a flame distributed over two different sectors), Grid with long spokes to facilitate holding small pots and pans
- 90° venturi that prevents the nozzle from clogging and accumulating dirt.
- Removable AISI 304 stainless steel bowl for maximum hygiene.
- Thanks to the jet-proofing certification (IPX5) obtained through specific tests, knobs and under-knobs can be washed, without compromising functionality and safety.

2-BURNER GAS COOKER TOP

CODICE
CR0995089

MODELLO
D92/10TCG

SERIE
DIAMANTE 90

Technical Information

SPECIFICATION	DATA
MATERIAL	CR0995089
DEFINITION	D92/10 TCG CUCINA GAS 2 FUOCHI TOP
COMMERCIAL LINE	DIAMANTE
SUPPLY	GAS
DIM. WIDTH	400 mm
DIM. PRODUCTIVITY	900 mm
DIM. HEIGHT	250 mm
NET WEIGHT	36.8 Kg
VOLUME (net)	0.09
PACKAGE LENGTH	450 mm
PACKAGE WIDTH	1020 mm
PACKAGING HEIGHT	570 mm
PACKAGE VOLUME	0,267 m3
GROSS PACKING WEIGHT	45 Kg
GAS POWER	10.5
GAS POWER (G25.3/25mbar)	9,00
GAS/REFRIGERANT TYPE	GPL 28-30/37 mbar
N. FIRES/PLATES	QUATTRO FUOCHI
CERTIFIED MODEL	D92/10 TCG

2-BURNER GAS COOKER TOP



weinnovate cooking

CODICE
CR0995089

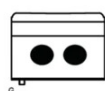
MODELLO
D92/10TCG

SERIE
DIAMANTE 90

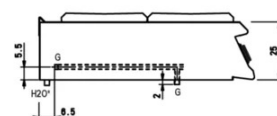
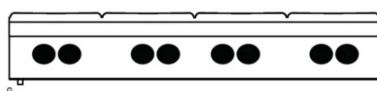
SCHEMA DI INSTALLAZIONE - INSTALLATION DIAGRAM - INSTALLATIONSPLAN - SCHÉMA D'INSTALLATION - ESQUEMA DE INSTALACION - INSTALLATIESCHEMA - IINSTALLATIONSRIJNINGAR

MISURE IN cm - DIMENSIONS IN cm - ABMESSUNGEN IN cm
MESURES EN cm - MEDIDAS EN cm - MATEN IN cm

(D) 92/10 TCG
(D) 92/10 TCGP
(D) 92/10 TCG1P



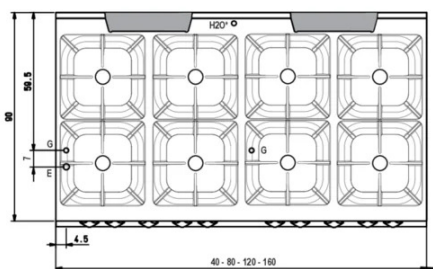
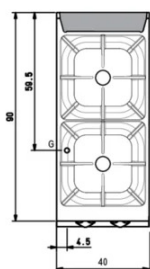
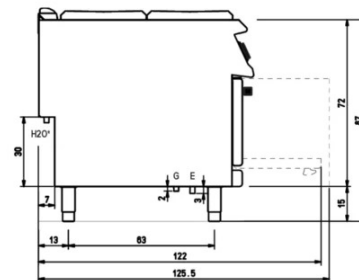
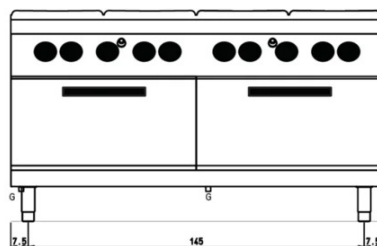
(D) 98/10 TCG
(D) 98/10 TCGP
(D) 98/10 TCG2P



(D) 92/10 CG
(D) 92/10 CGP
(D) 92/10 CG1P



(D) 98/10 CG (D) 98/10 CGG (D) 98/10 CGE
(D) 98/10 CGP (D) 98/10 CGGP (D) 98/10 CGEP
(D) 98/10 CG2P (D) 98/10 CGG2P (D) 98/10 CGE2P



Legenda - Legende - Key - Légende - Leyenda - Legenda

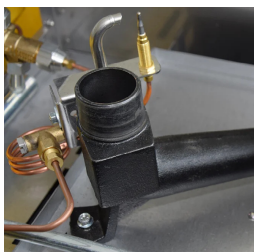
- E** Pressacavo entrata linea elettrica - Stopfbuchse
Electric cable stress relief - Presse étoupe de câble él
Pisacable - Elektrische kabelwartel
- G** Attacco arrivo gas - Gasanschluss - Gas connection
Arrivée gaz - Union de gas - Gasaansluiting
EN 10226-1 R 1/2; EN ISO 228-1 G 1/2 (DK)
- H2O*** Attacco arrivo acqua - Wasseranschluss - Water inlet
Arrivée eau - Union de agua - Wateraansluiting
EN ISO 228-1 G 3/4

2-BURNER GAS COOKER TOP

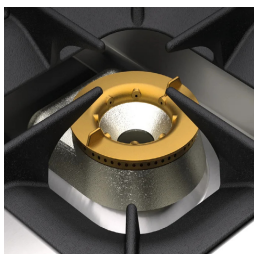
CODICE
CR0995089

MODELLO
D92/10TCG

SERIE
DIAMANTE 90



90° venturi that prevents the nozzle from clogging and accumulating dirt.



Nickel-plated cast-iron stabilised flame burners with double-crown spreader (improved performance facilitated by a flame distributed over two different sectors), Grid with long spokes to facilitate holding small pots and pans



Removable AISI 304 stainless steel bowl for maximum hygiene.



Thanks to the jet-proofing certification (IPX5) obtained through specific tests, knobs and under-knobs can be washed, without compromising functionality and safety.

2-BURNER GAS COOKER TOP

CODICE
CR0995089

MODELLO
D92/10TCG

SERIE
DIAMANTE 90

ACCESSORIES

CODE	MODELLO	DESCRIZIONE
SUPBRUC	SUPBRUC	Supplement for burner 10 kw 10 (Kcal 8598.45)
MA97365000	GGN1/1	CHROME GRILLE GN1/1
MA97375000	GGN2/1	CHROME GRILLE GN2/1
MA97377000	BF9M-X	Chrome-plated steel grill for oven 93x62 cm MAXI
MA97376900	TGN2/1	AISI 304 stainless steel tray for oven 53x65x1 cm GN 2/1
MA97378000	BF9M-T	AISI 304 stainless steel baking tray for oven 93x62x1,5 cm MAXI
CR1353839	CR1353839	Smooth cast iron radiant plate 39.4x34.8 cm
CR1353849	CR1353849	Striped radiant plate 39.6x34.8 cm