

# ELECTRIC FRYER 1 BOWL 15 L

CODICE  
CR1353759

MODELLO  
DT9215/10FRERE

SERIE  
DIAMANTE 90 TOUCH



## GENERAL CHARACTERISTICS

Diamond 90 Touch - Everything under control Everything is under control, perfect results every time. Thanks to the practical display, parameter selection is quick and precise. Easy and clear temperature management, and special functions are always visible and accessible from the display. Tradition and innovation, everything on your worktop A new non-slip square and rounded knob design for a more ergonomic grip and an embossed indicator that makes it easier to select the datum to be set. And with the exclusive Encoder Functionality, simply touch the parameter you want, turn the knob to adjust the level and press it to start the set datum. With water- and dirt-proof crown. Quick and precise parameter selection. Easy and clear temperature management. Special functions always visible and accessible from the display. Stainless steel outer shells and feet. Height from the work surface adjustable from 840 to 900mm. Tops with 2 mm thickness

## TECHNICAL SPECIFICATIONS

■ AISI 18/10 stainless steel tanks with cold zone and foam expansion zone. ■ Oil drain taps. ■ Oil drip pans on request. ■ Safety thermostat (230°C) against excessive oil temperatures Heating by means of an AISI 304 stainless steel armoured heating element inside the tank and rotatable by more than 90°.

■ Possibility of setting 2 timers to control cooking. An acoustic signal warns the operator at the end of the set time. ■ In the electric version, the heating element can be rotated by more than 90°. ■ Temperature control via touch screen and adjustment with

ergonomic knob ■ Moulded inner basin for easy cleaning. ■ MELTING function for using solid or semi-solid grease integrated in the touch control. ■ Everything is under control, perfect results every time. Thanks to the practical display, parameter selection is quick and precise. Easy and clear temperature management, and special functions are always visible and accessible from the display. ■ Thanks to the jet-proofing certification (IPX5) obtained through specific tests, knobs and under-knobs can be washed, without compromising functionality and safety.

# ELECTRIC FRYER 1 BOWL 15 L

CODICE  
CR1353759

MODELLO  
DT9215/10FRERE

SERIE  
DIAMANTE 90 TOUCH

## Technical Information

SPECIFICATION	DATA
MATERIAL	CR1353759
DEFINITION	DT9215/10 FRERE FR.R/RIB.1V15L ELETTRON.
COMMERCIAL LINE	DIAMANTE TOUCH
SUPPLY	ELECTRICS
DIM. WIDTH	400 mm
DIM. PRODUCTIVITY	930 mm
DIM. HEIGHT	950 mm
NET WEIGHT	0 Kg
VOLUME (net)	0.353
PACKAGE LENGTH	450 mm
PACKAGE WIDTH	850 mm
PACKAGING HEIGHT	1150 mm
PACKAGE VOLUME	0,440 m3
GROSS PACKING WEIGHT	0 Kg
STANDARD POWER SUPPLY	380-415V 3N
FREQUENCY	50/60 Hz
ELECTRICAL POWER	13 kW
IP GRADE	IPX5
CERTIFIED MODEL	DT9215/10 FRERE
Capacity	15 litri

# ELECTRIC FRYER 1 BOWL 15 L



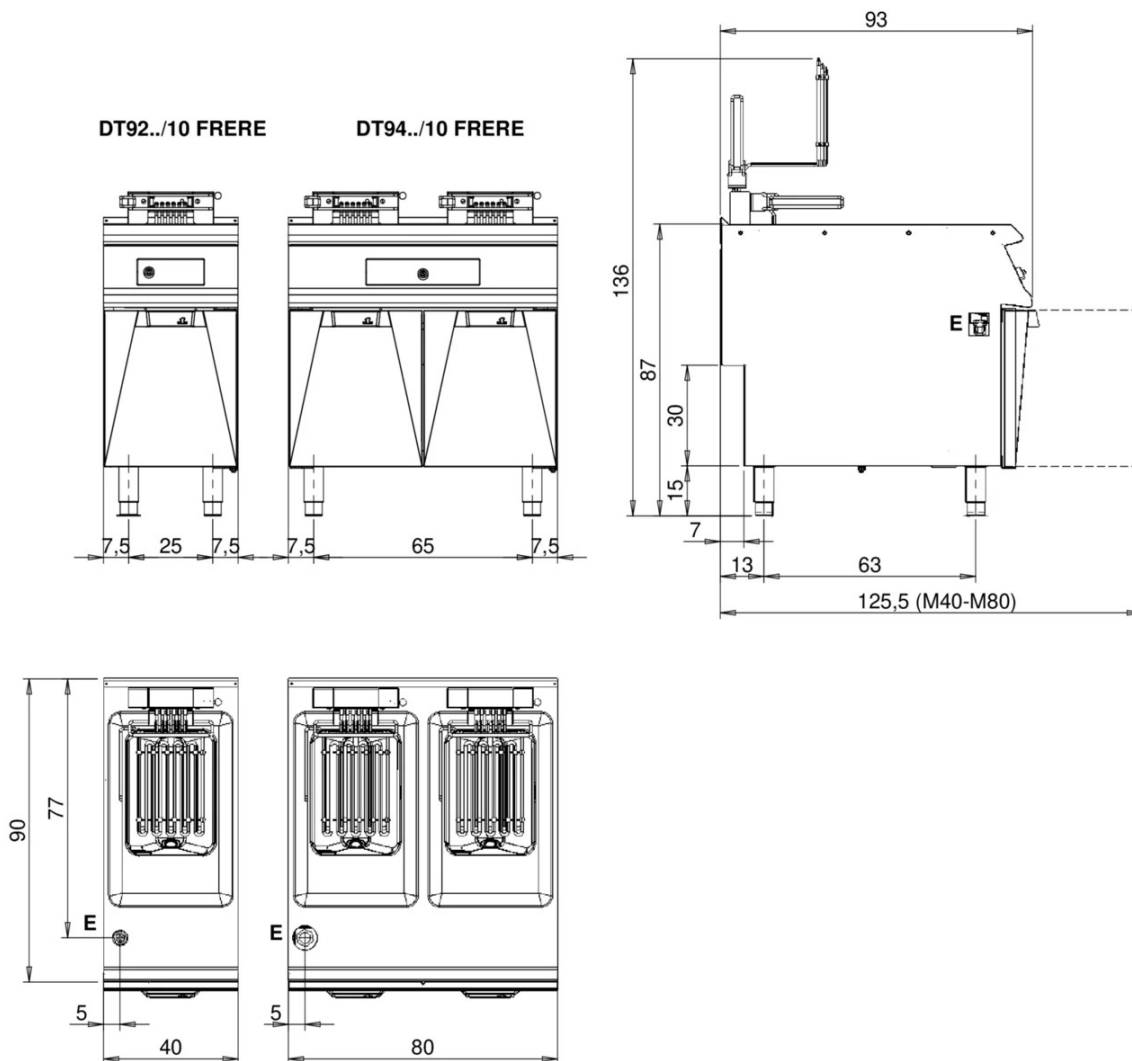
weinnovate cooking

CODICE  
CR1353759

MODELLO  
DT9215/10FRERE

SERIE  
DIAMANTE 90 TOUCH

MISURE IN cm - DIMENSIONS IN cm - ABMESSUNGEN IN cm - MESURES EN cm  
MEDIDAS EN cm - MATEN IN cm - DIMENSIONES EN cm



Legenda - Legende - Key - Légende - Leyenda - Legenda - Legenda	
<b>E</b> Pressacavo entrata linea elettrica - Stopfbuchse - Electric cable stress relief - Presse étoupe de câble él - Pisacable - Elektrische kabelwartel - Entrada cabo eléctrico	<b>G</b> Arrivo gas - Gasanschluss - Gas connection - Arrivée gaz - Union de gas - Gasaansluiting - Ligação gás
<b>S</b> Attacco scarico acqua - Wasserablauf - Water outlet - Vidange de l'eau - Desaguadero - Wateraftapaansluiting - Junção descarga água	<b>H20</b> Arrivo acqua - Wasseranschluss - Water inlet - Arrivée eau - Union de agua - Wateraansluiting - Junção alimentação água
<b>S1</b> Scarico vasca - Wannenabflussrohr - Pan outlet - Vidange du bac - Descarga cuba - Water toevoer - Descarga da cuba	<b>A1</b> = Calda - Heiss - Warm - Chaud - Caliente - Warm - Morno
<b>S2</b> Valvola di depressione - Anti-depression valve - Unterdruck ventil - Soupape de dépression - Válvula de depresión - Onderdrukkelep - Válvula de depressão	<b>A2</b> = Fredda - Kalt - Cold - Froid - Fria - Koude - Frio
<b>S3</b> Scarico acqua intercapedine - Wasserablauf Zwischenraum - Jacket water drain Evacuation eau double envelope - Descarga de agua intersticios - Afvoer water tussenruimte - Descarga de água na marmitta com Sistema de aquecimento indirecto	
<b>S4</b> Scarico - Abflussrohr - Drain - Tuyau d'évacuation - Tubo de drenaje - Aftapbuis - Tubulação de dreno	<b>L</b> Rubinetto di livello - Level tap - Wasserhahn - Robinet de niveau - Grifo de nivel - Niveaukraan - Torneira de nível

# ELECTRIC FRYER 1 BOWL 15 L

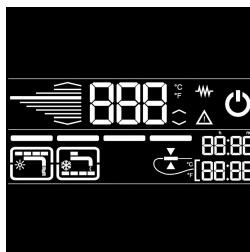
**CODICE**  
CR1353759

**MODELLO**  
DT9215/10FRERE

**SERIE**  
DIAMANTE 90 TOUCH



Possibility of setting 2 timers to control cooking. An acoustic signal warns the operator at the end of the set time.



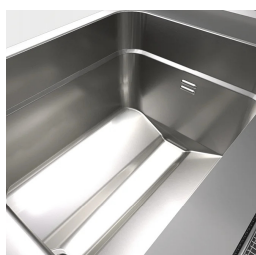
Everything is under control, perfect results every time. Thanks to the practical display, parameter selection is quick and precise. Easy and clear temperature management, and special functions are always visible and accessible from the display.



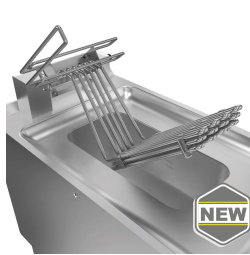
Temperature control via touch screen and adjustment with ergonomic knob



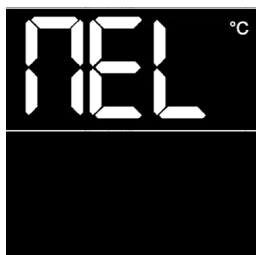
Thanks to the jet-proofing certification (IPX5) obtained through specific tests, knobs and under-knobs can be washed, without compromising functionality and safety.



Moulded inner basin for easy cleaning.



Heating element completely removable from the tank to allow faster and more complete cleaning. In 10- and 15-liter versions



MELTING function for using solid or semi-solid grease integrated in the touch control.

## ELECTRIC FRYER 1 BOWL 15 L

**CODICE**  
CR1353759

**MODELLO**  
DT9215/10FRERE

**SERIE**  
DIAMANTE 90 TOUCH

### ACCESSORIES

CODE	MODELLO	DESCRIZIONE
CR1353879	DCF15/17	Basket for tub 15 - 17 litres 1 pcs 24x33,7x12 cm capacity 15-17 litres
CR1353889	DCF15/17P	Small basket for tub 15-17 litres 1 pcs 12x33,7x12 cm capacity 15-17 litres
CR1353929	D9BRO	Oil pan 10-12 -15-17-22-23 litres
CR1356909	CA40/10	Chimney extension for mod. 40 cm h=22 cm