

Electric FRY TOP M120 AISI 430 Plate - smooth - On cabinet

CODICE
DT9610FTEA

MODELLO
DT96/10FTEA

SERIE
DIAMANTE 90 TOUCH



GENERAL CHARACTERISTICS

Diamond 90 Touch - Everything under control Everything is under control, perfect results every time. Thanks to the practical display, parameter selection is quick and precise. Easy and clear temperature management, and special functions are always visible and accessible from the display. Tradition and innovation, everything on your worktop A new non-slip square and rounded knob design for a more ergonomic grip and an embossed indicator that makes it easier to select the datum to be set. And with the exclusive Encoder Functionality, simply touch the parameter you want, turn the knob to adjust the level and press it to start the set datum. With water- and dirt-proof crown. Quick and precise parameter selection. Easy and clear temperature management. Special functions always visible and accessible from the display. Stainless steel outer shells and feet. Height from the work surface adjustable from 840 to 900mm. Tops with 2 mm thickness

TECHNICAL SPECIFICATIONS

■ Firing plates made with satin-finished surface and surface coated with soft iron, polished hard chrome or AISI 430 steel , all available in smooth, mixed or ribbed versions. ■ Welded plates tilted 10mm toward the machine front. ■ Stainless steel outer shells and feet. ■ Height from worktop adjustable from 840 to 900 mm.

■ Plate with armoured incoloy heating elements placed under the bottom for cooking with temperature uniformity. ■ Predisposition for core probe, for even greater cooking control. Reaching the set core

temperature is signalled by an acoustic signal ■ Plate welded to the hob for a larger cooking zone. ■ Temperature control via touch screen and adjustment with ergonomic knob ■ Everything is under control, perfect results every time. Thanks to the practical display, parameter selection is quick and precise. Easy and clear temperature management, and special functions are always visible and accessible from the display. ■ Thanks to the jet-proofing certification (IPX5) obtained through specific tests, knobs and under-knobs can be washed, without compromising functionality and safety.

Electric FRY TOP M120 AISI 430 Plate - smooth - On cabinet

CODICE
DT9610FTEA

MODELLO
DT96/10FTEA

SERIE
DIAMANTE 90 TOUCH

Technical Information

| SPECIFICATION | DATA |
|-----------------------|-------------|
| MATERIAL | DT9610FTEA |
| SUPPLY | ELECTRICS |
| DIM. WIDTH | 1200 mm |
| DIM. PRODUCTIVITY | 900 mm |
| DIM. HEIGHT | 870 mm |
| STANDARD POWER SUPPLY | 380-415V 3N |
| ELECTRICAL POWER | 22.5 kW |

Electric FRY TOP M120 AISI 430 Plate - smooth - On cabinet

CODICE
DT9610FTEA

MODELLO
DT96/10FTEA

SERIE
DIAMANTE 90 TOUCH

SCHEMA DI INSTALLAZIONE - INSTALLATION DIAGRAM - INSTALLATIONSPLAN - SCHÉMA D'INSTALLATION - ESQUEMA DE INSTALACION - INSTALLATIESCHEMA - IINSTALLATIONSRTNINGAR

MISURE IN cm - DIMENSIONS IN cm - ABMESSUNGEN IN cm
MESURES EN cm - MEDIDAS EN cm - MATEN IN cm



Legenda - Legende - Key - Légende - Leyenda - Legenda

E Pressacavo entrata linea elettrica - Stopfbuchse - Electric cable stress relief
Presse étoupe de câble él. - Pisacable - Elektrische kabelwartel

Electric FRY TOP M120 AISI 430 Plate - smooth - On cabinet

CODICE
DT9610FTEA

MODELLO
DT96/10FTEA

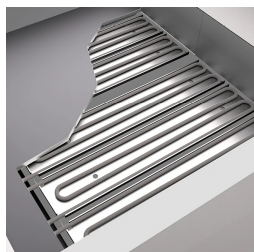
SERIE
DIAMANTE 90 TOUCH



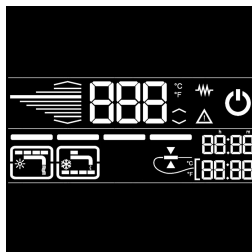
Possibility of setting 2 timers to control cooking. An acoustic signal warns the operator at the end of the set time.



Everything is under control, perfect results every time. Thanks to the practical display, parameter selection is quick and precise. Easy and clear temperature management, and special functions are always visible and accessible from the display.



Predisposition for core probe, for even greater cooking control. Reaching the set core temperature is signalled by an acoustic signal



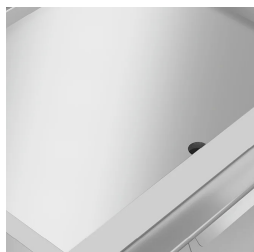
Everything is under control, perfect results every time. Thanks to the practical display, parameter selection is quick and precise. Easy and clear temperature management, and special functions are always visible and accessible from the display.



Plate welded to the hob for a larger cooking zone.



Thanks to the jet-proofing certification (IPX5) obtained through specific tests, knobs and under-knobs can be washed, without compromising functionality and safety.



Temperature control via touch screen and adjustment with ergonomic knob

Electric FRY TOP M120 AISI 430 Plate - smooth - On cabinet

CODICE
DT9610FTEA

MODELLO
DT96/10FTEA

SERIE
DIAMANTE 90 TOUCH

ACCESSORIES

| CODE | MODELLO | DESCRIZIONE |
|-----------|----------|---|
| CR0957610 | 90XFTP12 | SPLASH GUARD FOR FRY TOP MODULE 120 |
| CR0592079 | NXFTC4 | Fry top cleaning drawer M40-M120 |
| CR0592089 | NXFTC6/8 | Fry top cleaning drawer M40-M60-M80-M120 |
| CR0592060 | NXFTT | PLANCHA CLEANING PLUG |
| CR1356399 | RPR | Striped chrome plate scraper |
| CR1354989 | PRPC | Smooth plate cleaning scraper - chrome-plated |
| CR1354999 | PKLR | Replacement blades (10PCS) |