

# Electric FRY TOP M120 Soft Steel Plate - smooth - Version on compartment

CODICE  
CR1139329

MODELLO  
DT96/10FTE

SERIE  
DIAMANTE 90 TOUCH



## GENERAL CHARACTERISTICS

Diamond 90 Touch - Everything under control Everything is under control, perfect results every time. Thanks to the practical display, parameter selection is quick and precise. Easy and clear temperature management, and special functions are always visible and accessible from the display. Tradition and innovation, everything on your worktop A new non-slip square and rounded knob design for a more ergonomic grip and an embossed indicator that makes it easier to select the datum to be set. And with the exclusive Encoder Functionality, simply touch the parameter you want, turn the knob to adjust the level and press it to start the set datum. With water- and dirt-proof crown. Quick and precise parameter selection. Easy and clear temperature management. Special functions always visible and accessible from the display. Stainless steel outer shells and feet. Height from the work surface adjustable from 840 to 900mm. Tops with 2 mm thickness

## TECHNICAL SPECIFICATIONS

■ Firing plates made with satin-finished surface and surface coated with soft iron, polished hard chrome or AISI 430 steel, all available in smooth, mixed or ribbed versions. ■ Welded plates tilted 10mm toward the machine front. ■ Stainless steel outer shells and feet. ■ Height from worktop adjustable from 840 to 900 mm.

■ Possibility of setting 2 timers to control cooking. An acoustic signal warns the operator at the end of the set time. ■ Plate with armoured incoloy heating elements placed under the bottom for cooking with temperature uniformity. ■ Predisposition for core probe, for even greater cooking control. Reaching the set core temperature is

signalled by an acoustic signal ■ Plate welded to the hob for a larger cooking zone. ■ Temperature control via touch screen and adjustment with ergonomic knob ■ industry 4.0 ready version. ■ Everything is under control, perfect results every time. Thanks to the practical display, parameter selection is quick and precise. Easy and clear temperature management, and special functions are always visible and accessible from the display. ■ Thanks to the jet-proofing certification (IPX5) obtained through specific tests, knobs and under-knobs can be washed, without compromising functionality and safety.

# Electric FRY TOP M120 Soft Steel Plate - smooth - Version on compartment

CODICE  
CR1139329

MODELLO  
DT96/10FTE

SERIE  
DIAMANTE 90 TOUCH

## Technical Information

SPECIFICATION	DATA
<b>MATERIAL</b>	<b>CR1139329</b>
COMMERCIAL LINE	DIAMANTE TOUCH
<b>SUPPLY</b>	<b>ELECTRICS</b>
DIM. WIDTH	1200 mm
<b>DIM. PRODUCTIVITY</b>	<b>900 mm</b>
DIM. HEIGHT	870 mm
<b>PACKAGE LENGTH</b>	<b>950 mm</b>
PACKAGE WIDTH	1250 mm
<b>PACKAGING HEIGHT</b>	<b>1050 mm</b>
STANDARD POWER SUPPLY	380-415V 3N
<b>FREQUENCY</b>	<b>50-60 Hz</b>
ELECTRICAL POWER	22.5 kW
<b>IP GRADE</b>	<b>IPX5</b>
CERTIFIED MODEL	DT96/10FTE

# Electric FRY TOP M120 Soft Steel Plate - smooth -

## Version on compartment



weinnovate cooking

CODICE  
CR1139329

MODELLO  
DT96/10FTE

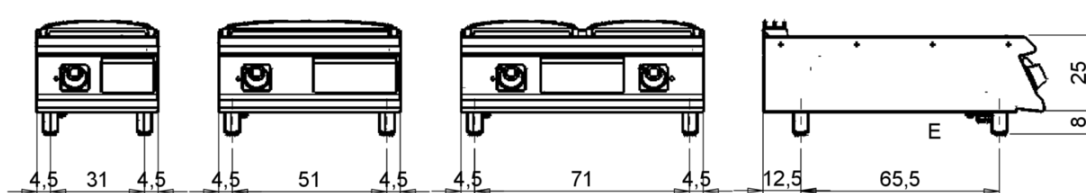
SERIE  
DIAMANTE 90 TOUCH

MISURE IN cm - DIMENSIONS IN cm - ABMESSUNGEN IN cm- MESURES EN cm  
MEDIDAS EN cm - MATEN IN cm - DIMENSIONES EN cm

D92/10STFTE..

D93/10STFTE..

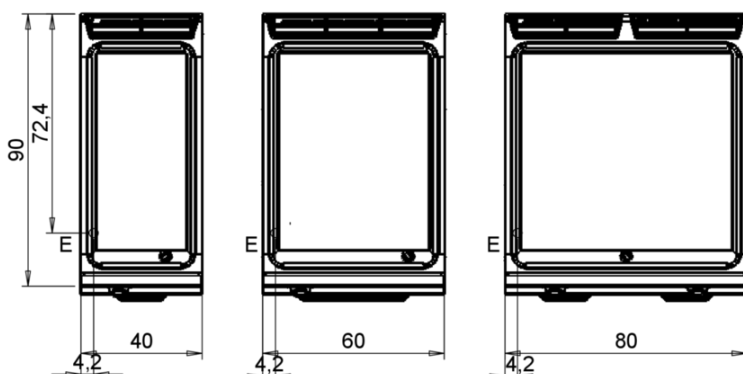
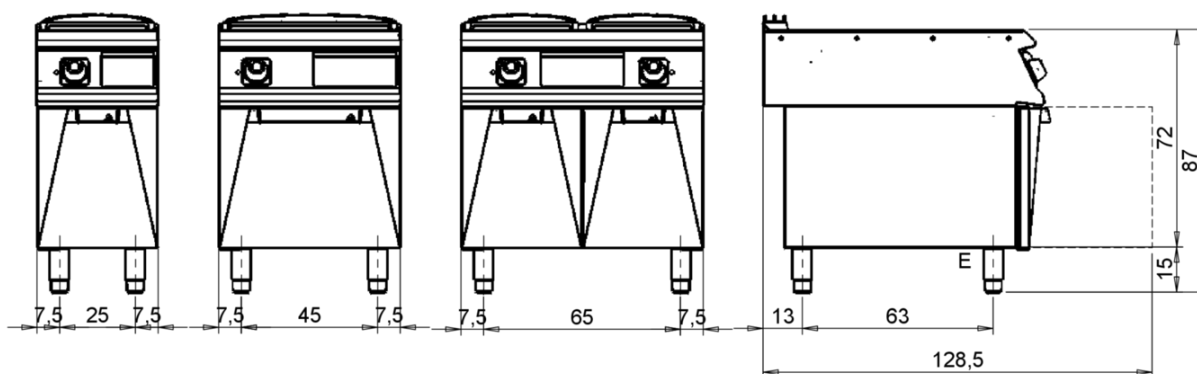
D94/10STFTE..



D92/10SFTE..

D93/10SFTE..

D94/10SFTE..



### Legenda - Legende - Key - Légende - Leyenda - Legenda - Legenda

<b>E</b> Pressacavo entrata linea elettrica - Stopfbuchse - Electric cable stress relief - Presse étoupe de câble él - Pisacable - Elektrische kabelwartel - Entrada cabo eléctrico	<b>G</b> Arrivo gas - Gasanschluss - Gas connection - Arrivée gaz - Union de gas - Gasaansluiting - Ligação gás
<b>S</b> Attacco scarico acqua - Wasserablauf - Water outlet - Vidange de l'eau - Desaguadero - Wateraftapaansluiting - Junção descarga água	<b>H20</b> Arrivo acqua - Wasseranschluss - Water inlet - Arrivée eau - Union de água - Wateraansluiting - Junção alimentação água
<b>S1</b> Scarico vasca - Wannenabflussrohr - Pan outlet - Vidange du bac - Descarga cuba - Water toevoer - Descarga da cuba	<b>A1 =</b> Calda - Heiss - Warm - Chaude - Caliente - Warm - Morno
<b>S2</b> Valvola di depressione - Anti-depression valve - Unterdruck ventil - Soupape de dépression - Válvula de depresión - Onderdrukklep - Válvula de depressão	<b>A2 =</b> Fredda - Kalt - Cold - Froid - Fria - Koude - Frio
<b>S3</b> Scarico acqua intercapedine - Wasserablauf Zwischenraum - Jacket water drain Evacuation eau double envelope - Descarga de agua intersticios - Afvoer water tussenruimte - Descarga de água na marmitta com Sistema de aquecimento indirecto	
<b>S4</b> Scarico - Abflussrohr - Drain - Tuyau d'évacuation - Tubo de drenaje - Aftapbuis - Tubulação de dreno	<b>L</b> Rubinetto di livello - Level tap - Wasserhahn - Robinet de niveau - Grifo de nivel - Niveaukraan - Torneira de nível

# Electric FRY TOP M120 Soft Steel Plate - smooth - Version on compartment

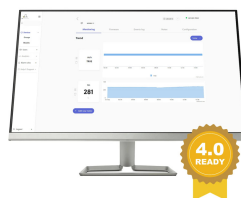
**CODICE**  
CR1139329

**MODELLO**  
DT96/10FTE

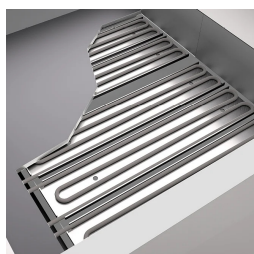
**SERIE**  
DIAMANTE 90 TOUCH



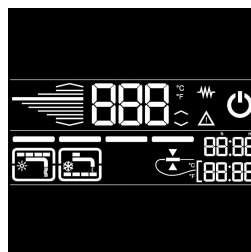
Possibility of setting 2 timers to control cooking. An acoustic signal warns the operator at the end of the set time.



Temperature control via touch screen and adjustment with ergonomic knob



Predisposition for core probe, for even greater cooking control. Reaching the set core temperature is signalled by an acoustic signal



Everything is under control, perfect results every time. Thanks to the practical display, parameter selection is quick and precise. Easy and clear temperature management, and special functions are always visible and accessible from the display.



Plate welded to the hob for a larger cooking zone.



Thanks to the jet-proofing certification (IPX5) obtained through specific tests, knobs and under-knobs can be washed, without compromising functionality and safety.



Temperature control via touch screen and adjustment with ergonomic knob

# Electric FRY TOP M120 Soft Steel Plate - smooth - Version on compartment

CODICE  
CR1139329

MODELLO  
DT96/10FTE

SERIE  
DIAMANTE 90 TOUCH

## ACCESSORIES

CODE	MODELLO	DESCRIZIONE
CR0957610	90XFTP12	SPLASH GUARD FOR FRY TOP MODULE 120
CR0592079	NXFTC4	Fry top cleaning drawer M40-M120
CR0592089	NXFTC6/8	Fry top cleaning drawer M40-M60-M80-M120
CR0592060	NXFTT	PLANCHA CLEANING PLUG
CR1356399	RPR	Striped chrome plate scraper
CR1354989	PRPC	Smooth plate cleaning scraper - chrome-plated
CR1354999	PKLR	Replacement blades (10PCS)