

28 kg/ 24h

Ice makers - Spray System / Ice makers - Spray System:
C28 - C28 + - C38 - C38L - C46 - C46L - C54 - C70 - C70L - C90 - C90L

C28 + ALL GAS
220-240/50/1
Ice makers - Spray System

- RAINBOW TECHNOLOGY
- USB
- PROGRAMMED OZONE CYCLE
- SCHEDULED PRODUCTION
- TOUCH CONTROL
- BLUETOOTH
- WI-FI
- SAFE ICE

FEATURES

- Steel casing
- Air or water condensation
- Sanitization cycle
- Programmable ice production
- Capacitive control key
- Audible and light signaling alarms
- HACCP alarm report
- External cube weight adjustment
- USB connection for software update and HACCP data download
- Condenser fan controlled at low ambient temperatures
- Programmable ice production
- Predictive failure analysis
- Equipment performance report

OPTIONAL

- Sanitization cycle programmable with ozone
- Nanotechnological evaporator treatment with Rainbow Technology
- IoT cloud connection
- Feet kit 100mm



DEPOSIT

7,0 kg
350 pcs

DIMENSIONS

	L x P x H (mm)
	400 x 480 x 600
	460 x 600 x 850

VOLTAGE

220-240/50/1
220/60/1

GAS

R290
GWP 3

TECHNICAL DATA

		cond	comp. W	ABS. W	Fuse	Kwh/100Kg	l/h	Kg	Kg
C28 + A AG 220-240/50/1N			653	310	10	36.6	2.6	35	30
C28 + W AG 220-240/50/1N			653	280	10	22.8	38.7	35	30

ICE TYPE

	PCS / CYCLE PZ / CICLO	WEIGHT ICE PESO GHIACCIO
Cubetto PIENO 20 g -28/28+ 35x 32x 37mm	18	20 g

ICE PRODUCTION

kg/24h
lbs/24h

Air cooled unit



Temp. Aria Air Temp.	Temp. Acqua /Water Temp.			
	10° 50°	15° 59°	21° 70°	32° 90°
10°	28	26	24	20
50°	62	57	53	44
21°	25	23	22	18
70°	55	51	48	40
32°	22	20	19	15
90°	48	44	42	33
38°	18	17	16	13
100°	40	37	35	29

Water cooling



Temp. Aria Air Temp.	Temp. Acqua /Water Temp.			
	10° 50°	15° 59°	21° 70°	32° 90°
10°	28	26	24	20
50°	62	57	53	44
21°	27	25	23	19
70°	60	55	51	42
32°	26	24	22	18
90°	57	53	48	40
38°	21	20	18	16
100°	46	44	40	35

28 kg/ 24h

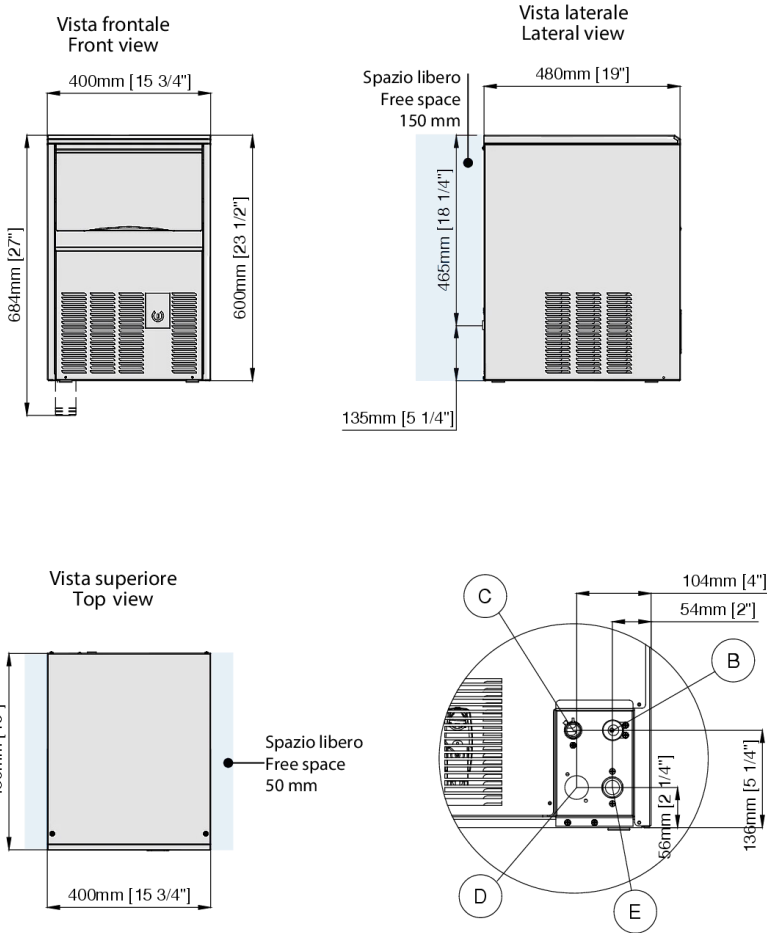
Ice makers - Spray System / Ice makers - Spray System:
C28 - C28 + - C38 - C38L - C46 - C46L - C54 - C70 - C70L - C90 - C90L

C28 + ALL GAS

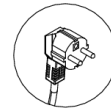
220-240/50/1

Ice makers - Spray System

DIMENSIONS



- B** Electrical cable supply / Ingresso alimentazione elettrica
- C** Water outlet connection / Attacco scarico acqua Ø 20 mm
- D** Water outlet connection water condensation / Uscita acqua condensatore ad acqua Ø 20 mm
- E** Water inlet connection / Attacco entrata acqua - 3/4"G



Schuko plug / Spina schuko

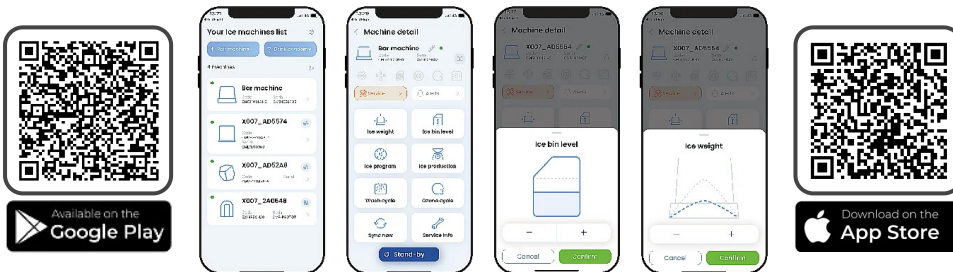


Kit 4 Feet / Kit 4 piedini / Ø50mm H100-120 mm

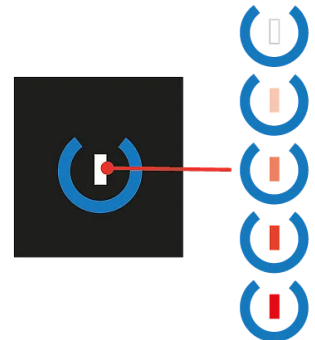
(Opzionali-optional)

MyICE

Allow control and monitoring of ice makers directly from smartphone / Allow control and monitoring of ice makers directly from smartphone



TOUCH CONTROL



Operating conditions

	Min	Max
Temp. Ambient	10°C	40°C
Temp. Water Ice	5°	35°
Press. Water	1 Bar (14psi)	10 Bar (140psi)
Conducib.water	20 microS	500 microS
Power Supply	-10%	+10%

Capacitive Stand-by / Start button
(LED continuously changing colors from white to red)

Heat expelled	947 W
Air Volume	185 m³/h