

400 kg/ 24h

Granular ice makers / Granular ice makers:

B95C - B130C - B160C - B200C - B125 - B165 - B205 - B305S - B405 - B505

B405 ALLGAS

220-240/50/1

Granular ice makers



USB



PROGRAMMED  
OZONE CYCLE



SCHEDULED  
PRODUCTION



TOUCH  
CONTROL



BLUETOOTH



WI-FI

## FEATURES

- Steel casing
- Air and water condensation
- Sanitization cycle
- Capacitive control key
- Audible and light signaling alarms
- HACCP alarm report
- USB connection for software update and HACCP data download
- Condenser fan controlled at low ambient temperatures
- Programmable ice production
- Predictive failure analysis
- Equipment performance report
- Removable and washable air filter



## OPTIONAL

- Sanitization cycle programmable with ozone
- IoT cloud connection

## DEPOSIT

MG405(KBM405)  
MG505(KBM505)  
MB500-700-1000  
MC140-320-620

## DIMENSIONS

L x P x H (mm)



668 x 668 x 709



750 x 727 x 855

## VOLTAGE



220-240/50/1

## GAS



R290  
GWP 3

## ICE TYPE

RESIDUAL WATER  
CONTENUTO  
ACQUA



Ghiaccio FLAKER

8%

## ICE PRODUCTION

kg/24h  
lbs/24h

Air cooled unit



Temp. Aria Air Temp.	Temp. Acqua /Water Temp.			
	10° 50°	15° 59°	21° 70°	32° 90°
10° 50°	400 881	395 870	386 850	349 769
21° 70°	385 848	367 808	352 775	323 711
32° 90°	338 744	324 714	310 683	279 614
38° 100°	249 548	240 528	229 504	207 456

Water cooling



Temp. Aria Air Temp.	Temp. Acqua /Water Temp.			
	10° 50°	15° 59°	21° 70°	32° 90°
10° 50°	410 903	401 883	387 852	349 769
21° 70°	412 908	391 861	378 833	341 751
32° 90°	391 861	377 830	356 784	328 722
38° 100°	359 791	346 762	326 718	297 654

## TECHNICAL DATA



cond

comp. W

ABS. W

Fuse

Kwh/100Kg

l / h

Kg

Kg

B405 A AG 220-240V/50/1 2446 1400 16 10.7 13.1 103 112

B405 W AG 220-240V/50/1 2446 1300 16 8.3 65.6 103 112

**400 kg/ 24h**

Granular ice makers / Granular ice makers:

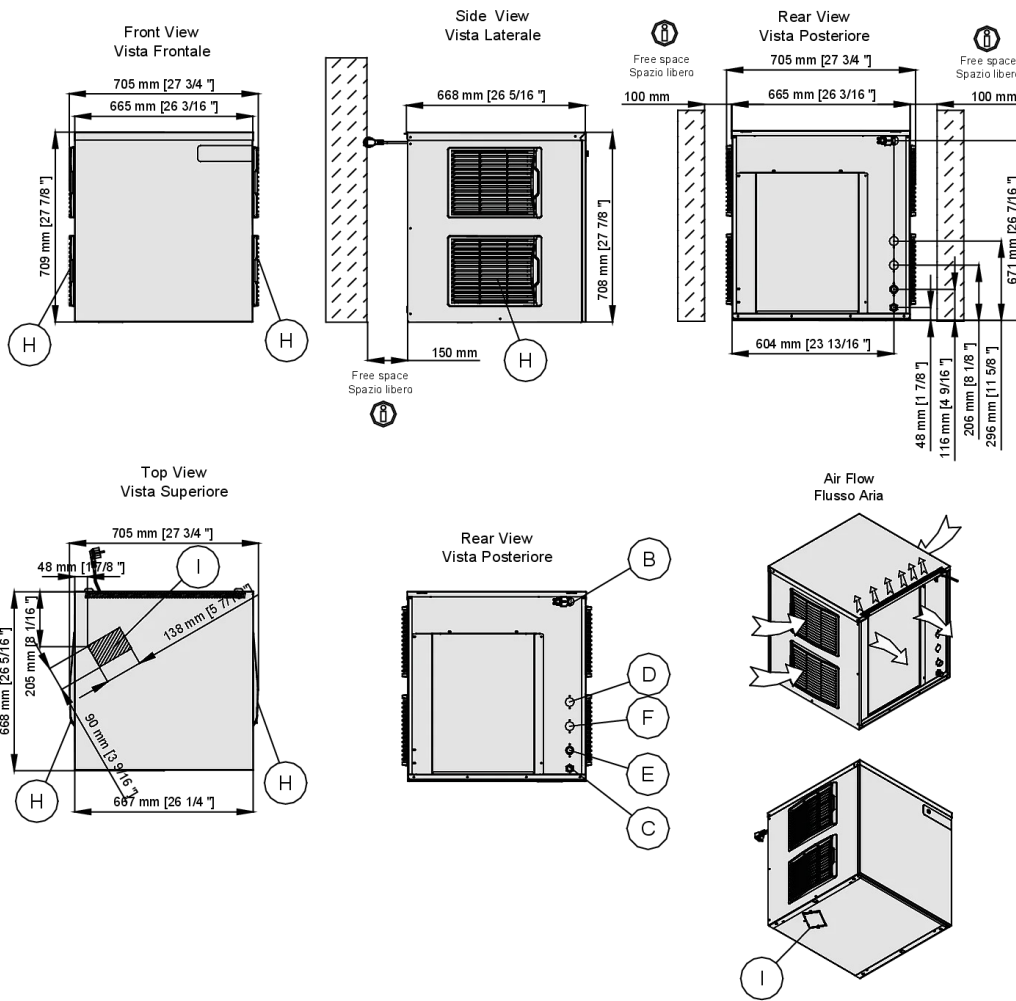
B95C - B130C - B160C - B200C - B125 - B165 - B205 - B305S - B405 - B505

B405 ALLGAS

220-240/50/1

Granular ice makers

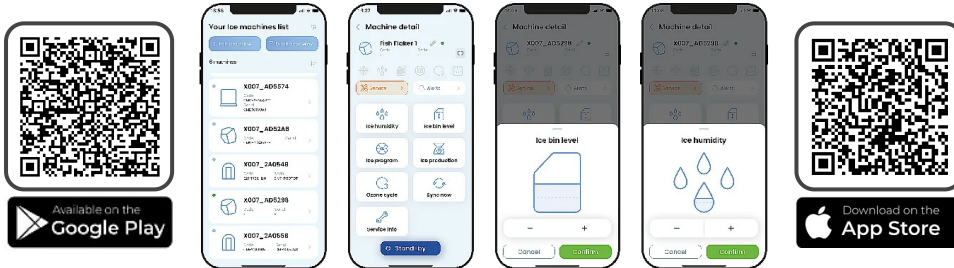
## DIMENSIONS



- B** Ingresso alimentazione elettrica  
Electrical cable supply
- C** Attacco scarico acqua  
Water outlet connection  
Ø 20 mm
- D** Uscita acqua condensatore ad acqua/Water outlet connection water condensation 3/4"G
- E** Attacco entrata acqua  
Water inlet connection  
3/4"G
- F** Entrata acqua condensatore ad acqua / Water inlet connection water condensation 3/4"G
- H** Filtro aria  
Air filter
- I** Foro caduta ghiaccio  
Ice drop area

## MyICE

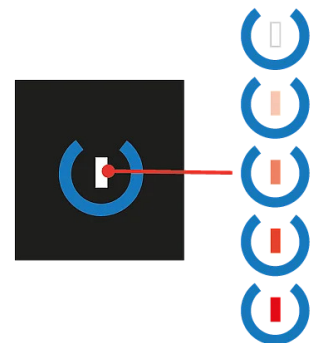
Allow control and monitoring of ice makers directly from smartphone / Allow control and monitoring of ice makers directly from smartphone



### Operating conditions

	Min	Max
Temp. Ambient	10°C	40°C
Temp. Water Ice	5°	35°
Press. Water	1 Bar (14psi)	10 Bar (140psi)
Conducib.water	20 microS	500 microS
Power Supply	-10%	+10%

## TOUCH CONTROL



Capacitive Stand-by / Start button  
(LED continuously changing colors from white to red)

Heat expelled	3679 W
Air Volume	1000 m <sup>3</sup> /h