

# ELECTRIC MULTI-PURPOSE BRATT PAN

CODICE  
CR1139489T4W

MODELLO  
DT93/10KBEF-T4W

SERIE  
DIAMANTE 4.0



## GENERAL CHARACTERISTICS

Diamond 90 Touch 4.0 - Everything under control Everything is under control, perfect results every time. Thanks to the practical display, parameter selection is quick and precise. Easy and clear temperature management, and special functions are always visible and accessible from the display. Tradition and innovation, everything on your worktop A new non-slip square and rounded knob design for a more ergonomic grip and an embossed indicator that makes it easier to select the datum to be set. And with the exclusive Encoder Functionality, simply touch the parameter you want, turn the knob to adjust the level and press it to start the set datum. With water- and dirt-proof crown. Quick and precise parameter selection. Easy and clear temperature management. Special functions always visible and accessible from the display. Stainless steel outer shells and feet. Height from worktop adjustable from 840 to 900 mm. Tops with 2 mm thickness All model-identified equipment (T4W) is 4.0 Ready equipment, allowing you to benefit from all the advantages of connecting your equipment to a cloud system.

## TECHNICAL SPECIFICATIONS

■ Tank made entirely of AISI 304 steel. ■ Heating is achieved by means of armoured heating elements placed under the bottom of the tank. ■ The temperature, thermostatically controlled, is adjustable from 50 to 300°C

■ Plate with armoured incoloy heating elements placed under the bottom for cooking with temperature uniformity. ■ Temperature control via touch screen and adjustment with ergonomic knob ■ Predisposition for core probe, for even greater cooking control.

Reaching the set core temperature is signalled by an acoustic signal.

■ industry 4.0 ready version. ■ Everything is under control, perfect results every time. Thanks to the practical display, parameter selection is quick and precise. Easy and clear temperature management, and special functions are always visible and accessible from the display. ■ Thanks to the jet-proofing certification (IPX5) obtained through specific tests, knobs and under-knobs can be washed, without compromising functionality and safety.

## ELECTRIC MULTI-PURPOSE BRATT PAN

**CODICE**  
CR1139489T4W

**MODELLO**  
DT93/10KBEF-T4W

**SERIE**  
DIAMANTE 4.0

### Technical Information

SPECIFICATION	DATA
<b>MATERIAL</b>	<b>CR1139489T4W</b>
SUPPLY	ELECTRICS
<b>DIM. WIDTH</b>	<b>600 mm</b>
DIM. PRODUCTIVITY	900 mm
<b>DIM. HEIGHT</b>	<b>870 mm</b>
STANDARD POWER SUPPLY	380-415V 3N
<b>ELECTRICAL POWER</b>	<b>8.1 kW</b>

# ELECTRIC MULTI-PURPOSE BRATT PAN

CODICE  
CR1139489T4W

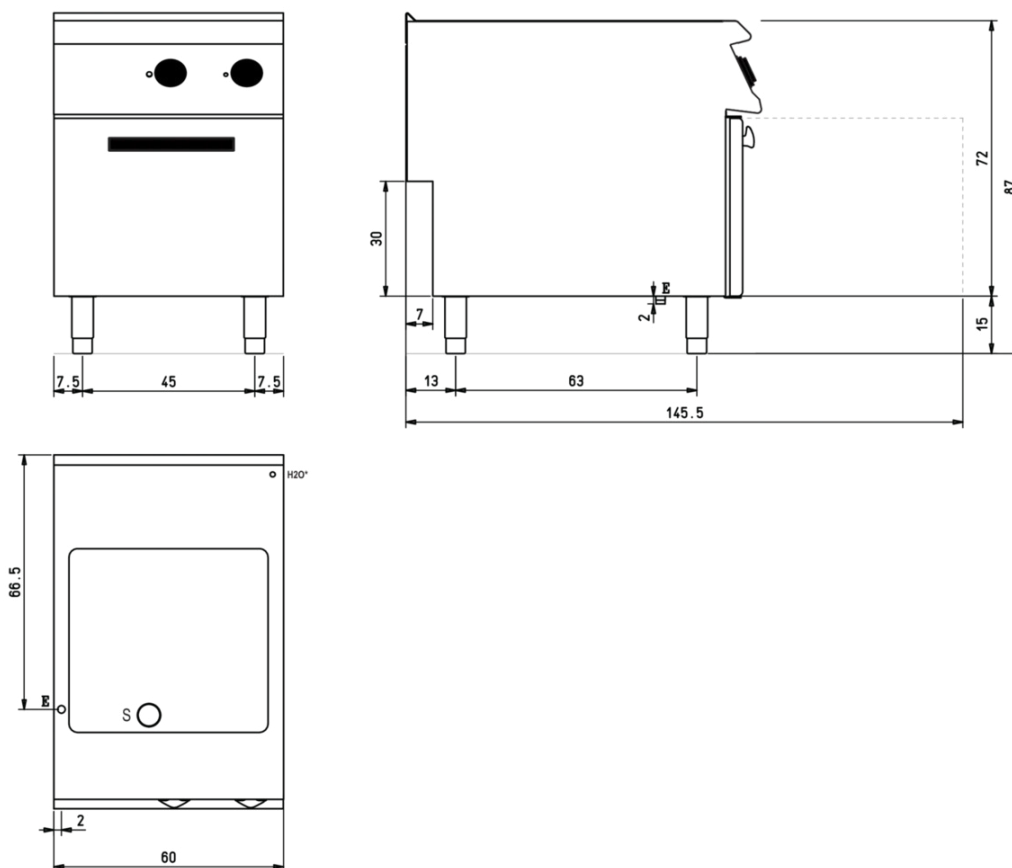
MODELLO  
DT93/10KBEF-T4W

SERIE  
DIAMANTE 4.0

## SCHEMA DI INSTALLAZIONE - INSTALLATION DIAGRAM - INSTALLATIONSPLAN - SCHÉMA D'INSTALLATION - ESQUEMA DE INSTALACION - INSTALLATIESCHEMA - IINSTALLATIONSRIJNINGAR

MISURE IN cm - DIMENSIONS IN cm - ABMESSUNGEN IN cm  
MESURES EN cm - MEDIDAS EN cm - MATEN IN cm

### (D) 93/10 KBEF



### Legenda - Legende - Key - Légende - Leyenda - Legenda

- E** Pressacavo entrata linea elettrica - Stopfbuchse - Electric cable stress relief  
Presse étoupe de câble él. - Pisacable - Elektrische kabelwartel
- S** Scarico vasca - Wannenabflussrohr - Pan outlet  
Vidange du bac - Descarga cuba - Water toevoer
- H20\*** Attacco arrivo acqua - Wasseranschluss - Water inlet  
Arrivée eau - Union de agua - Wateraansluiting  
**EN ISO 228-1 G 3/4**

# ELECTRIC MULTI-PURPOSE BRATT PAN

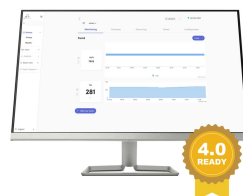
**CODICE**  
CR1139489T4W

**MODELLO**  
DT93/10KBEF-T4W

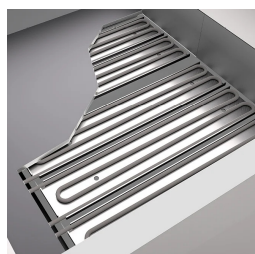
**SERIE**  
DIAMANTE 4.0



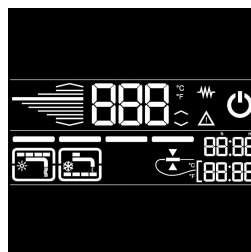
Possibility of setting 2 timers to control cooking. An acoustic signal warns the operator at the end of the set time.



Temperature control via touch screen and adjustment with ergonomic knob



Predisposition for core probe, for even greater cooking control. Reaching the set core temperature is signalled by an acoustic signal



Everything is under control, perfect results every time. Thanks to the practical display, parameter selection is quick and precise. Easy and clear temperature management, and special functions are always visible and accessible from the display.



Everything is under control, perfect results every time. Thanks to the practical display, parameter selection is quick and precise. Easy and clear temperature management, and special functions are always visible and accessible from the display.



Thanks to the jet-proofing certification (IPX5) obtained through specific tests, knobs and under-knobs can be washed, without compromising functionality and safety.



Predisposition for core probe, for even greater cooking control. Reaching the set core temperature is signalled by an acoustic signal.

## ELECTRIC MULTI-PURPOSE BRATT PAN

**CODICE**  
CR1139489T4W

**MODELLO**  
DT93/10KBEF-T4W

**SERIE**  
DIAMANTE 4.0

### ACCESSORIES

CODE	MODELLO	DESCRIZIONE
CR1357499	4.0IOTPRO	PRO Subscription - Cloud
CR1357479	4.0IOTENTRY	ENTRY Subscription - Cloud